



REGIONAL WASTEWATER COMMISSION

Project Background

The Sylvan Lake Regional Wastewater Commission has been established to deal with the wastewater issues affecting the surrounding Sylvan Lake area. The total/final project will involve the collection of all the wastewater from all the surrounding communities and its transportation to the City of Red Deer Wastewater Treatment Plant.

The Interim measures will be used until the regional transmission system is extended to the City of Red Deer Wastewater Treatment Plant.

Member Communities

The following Member Communities have come together to form the Sylvan Lake Regional Wastewater Commission; the Summer Village of Birchcliff, the Summer Village Half Moon Bay, the Summer Village Jarvis Bay, the Summer Village Norglenwold and the Summer Village Sunbreaker Cove, Red Deer County, Lacombe County, and the Town of Sylvan Lake.

Project – Phase 1

Phase 1 of the SLRWWC Project involves the construction of a wastewater transmission line, approximately 10km in length and a septage receiving station.

The transmission line will connect the septage receiving station to the existing Sylvan Lake Wastewater Treatment Plant. The septage receiving station will allow for safer controlled collection of wastewater from septic collection vehicles. This will also eliminate the need for “surface spreading”.



Water for Life: Alberta's Strategy for Sustainability is the Government of Alberta's response to develop a new water management approach and outline specific strategies and actions to address these issues.

In Alberta, our quality of life and life itself, depends on having a healthy and sustainable water supply for the environment, for our communities, and for our economic well being.

The Government of Alberta is committed to the wise management of Alberta's water quantity and quality for benefit of Albertans now and in the future.

Population growth, droughts, and agricultural and industrial development are increasing demand and pressure on the province's water supplies, and the risk to the health and well-being of Albertans, our economy, and our aquatic systems.

Project Contacts

For more information please contact:

Sylvan Lake Regional Wastewater Commission

John Van Doesburg Ph: 403.391.0270

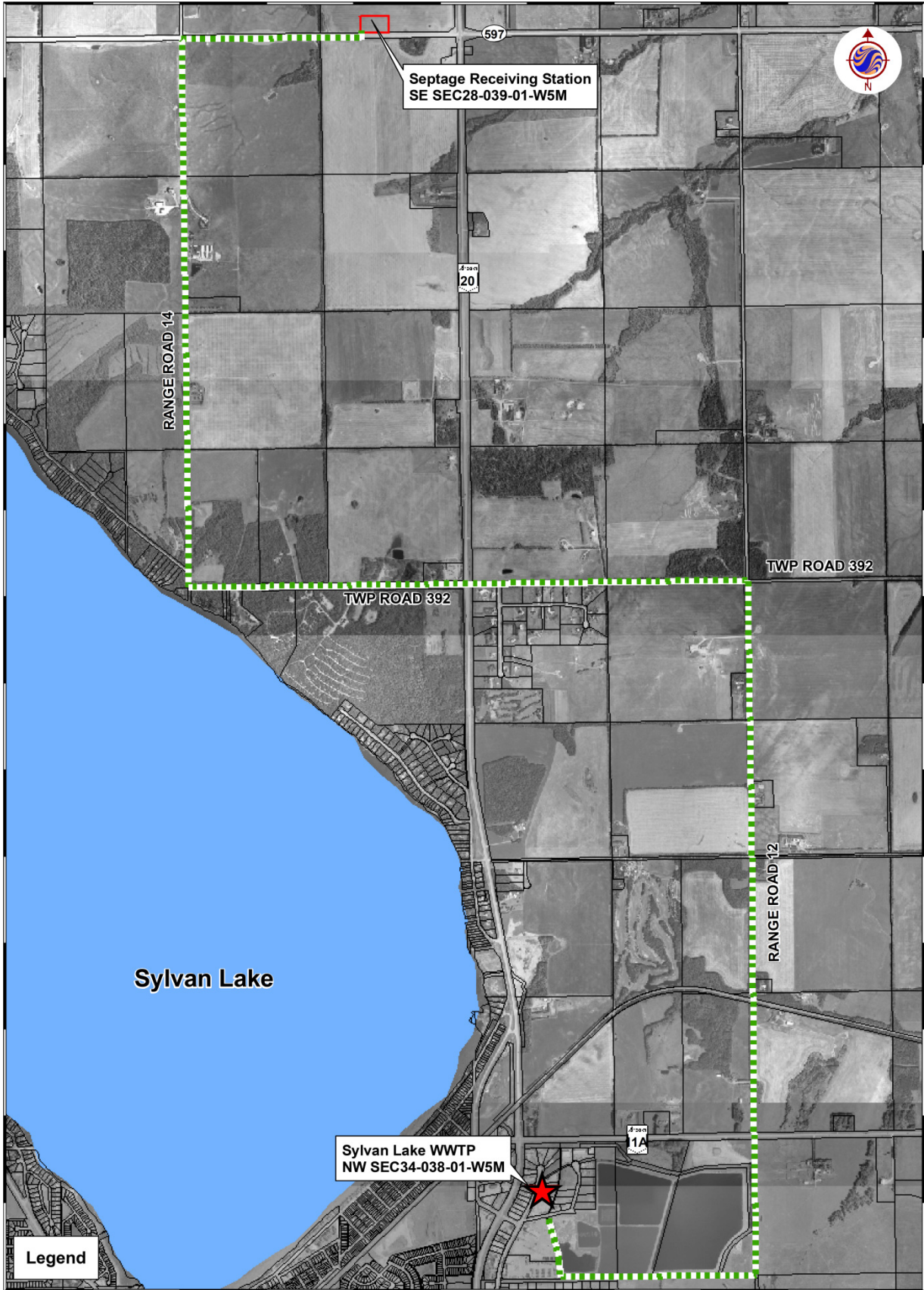
Stantec Consulting Ltd.

Tim Ainscough Ph: 403.341.3320

D - Line Construction

Ph: 1-877-986-5540





Stantec Consulting Ltd.
600, 4808 Ross Street
Red Deer AB Canada
T4N 1X5
Tel. 403.341.3320

**Sanitary Transmission Pipeline
Septage Receiving Station to Sylvan Lake WWTP**

**SYLVAN LAKE REGIONAL
WASTEWATER COMMISSION**

Client/Project 113928144-03
SYLVAN LAKE REGIONAL
WASTEWATER COMMISSION
SANITARY PIPELINE
Figure No. 1
Title SANITARY PIPELINE
May, 2010